



ORGANIZED BY

**ITALIAN  
EXHIBITION  
GROUP**  
Providing the future

IN COLLABORATION WITH



**ACIMAC**  
Association of Italian Manufacturers of  
Machinery and Equipment for Ceramics



WITH THE SUPPORT OF



Ministero degli Affari Esteri  
e della Cooperazione Internazionale



**ITA**  
ITALIAN TRADE AGENCY  
S.p.A. - Agenzia per la promozione all'estero e  
l'internazionalizzazione delle imprese italiane

[madeinitaly.gov.it](http://madeinitaly.gov.it)

**DECORTECH**  
conference

Rimini Palacongressi - Italy

**14 JUNE 2023**





# **Laser applications and 3D special sanding effects**

Lorenzo Bugli





## Sanding solutions – DMC range

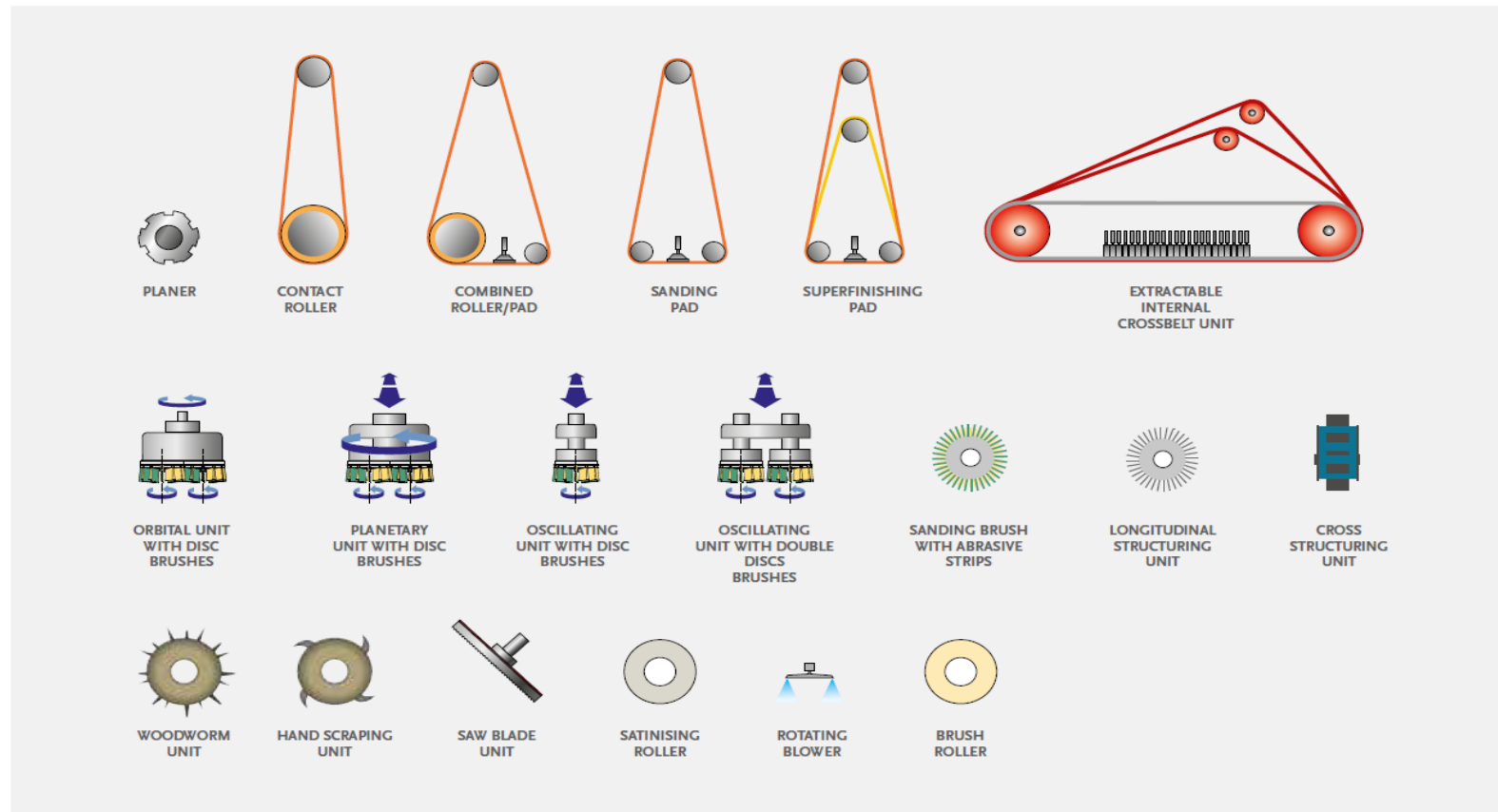
SCM system sanding machines are distinguished for being flexible abrasive machining centres that allow to pair carving units with abrasive brushes units, thus creating a 3D surface ready for the following phase.





## Sanding solutions – DMC range

SCM system sanding machines are distinguished for being flexible abrasive machining centres that allow to pair carving units with abrasive brushes units, thus creating a 3D surface ready for the following phase.



**14 JUNE 2023**

## Sanding solutions – 3D effects with carving unit



The innovative **carving unit** allows to **obtain valued design lines and finishing effects** that evokes manual woodworking **processes**, providing an authentic and valuable characteristic to wooden furniture.

The operating unit is able to rapidly reproduce, by brushless servomotors, **various carving effects** that differ in **depth, direction and shape** of the pattern grooves.

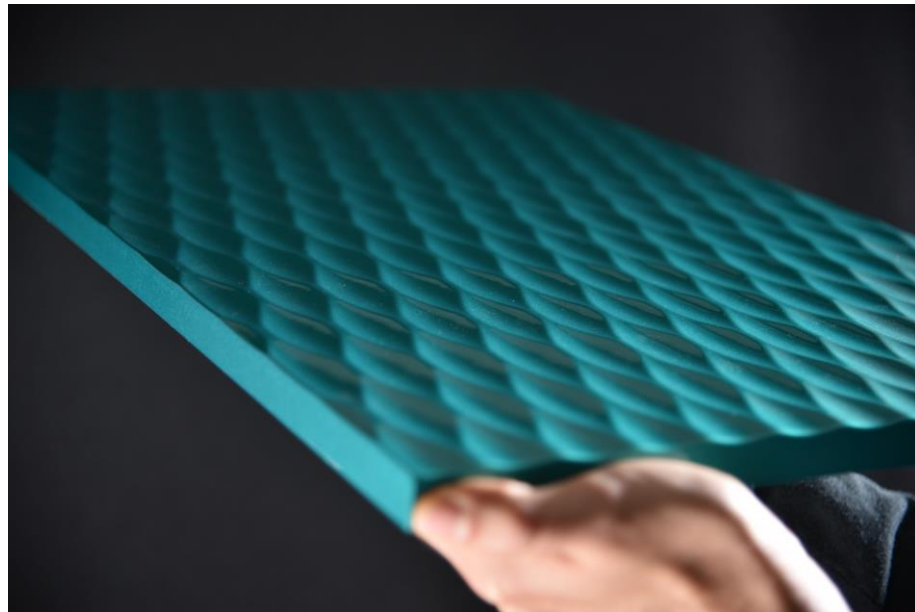


**14 JUNE 2023**

## Sanding solutions – 3D effects with carving unit



This multifunctional **solution** creates the look of a truly carved surface on solid wood and MDF, this technology can be applied to many application sectors such as parquet flooring, home furniture and internal wall manufacturing.

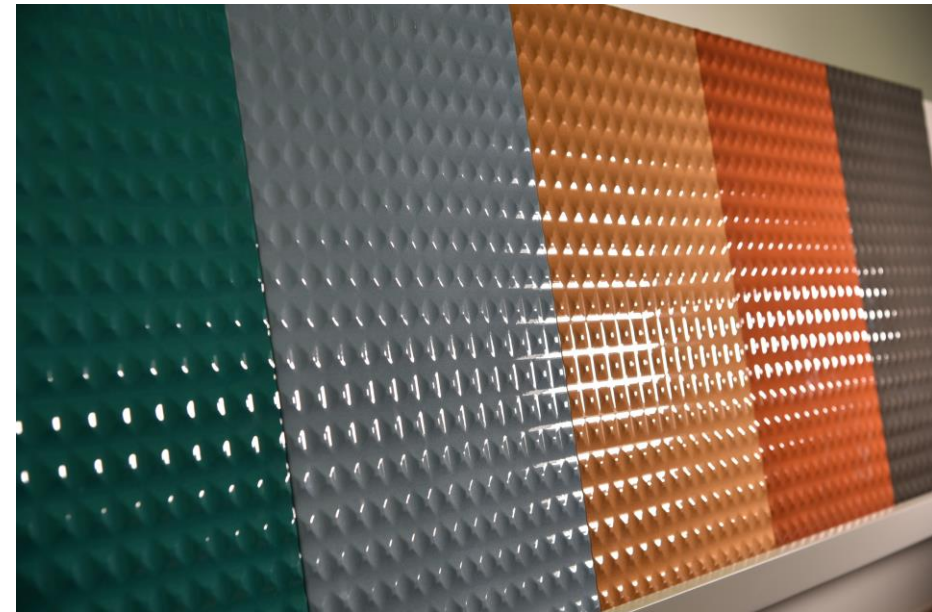
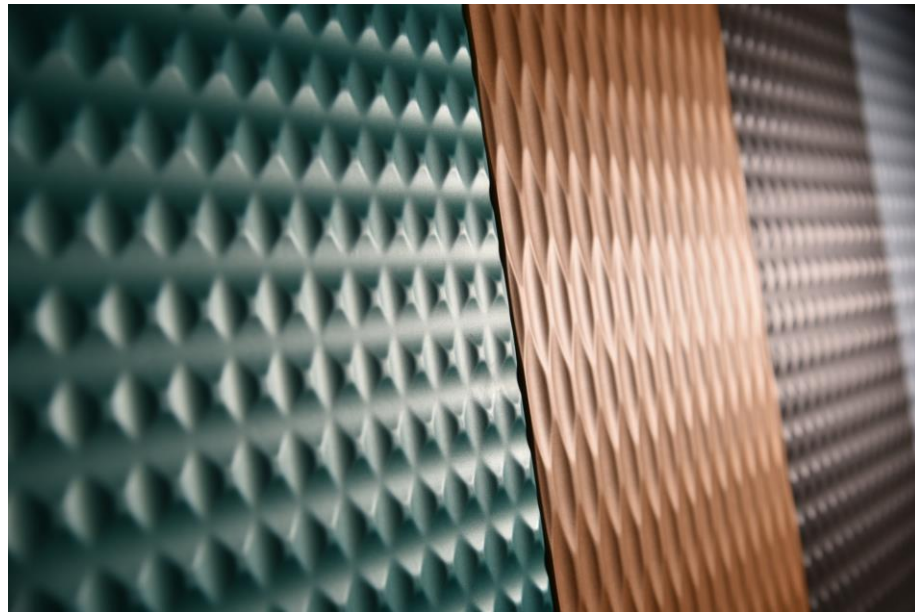




## Sanding solutions – 3D effects with carving unit



This multifunctional **solution** creates the look of a truly carved surface on solid wood and MDF, this technology can be applied to many application sectors such as parquet flooring, home furniture and internal wall manufacturing.

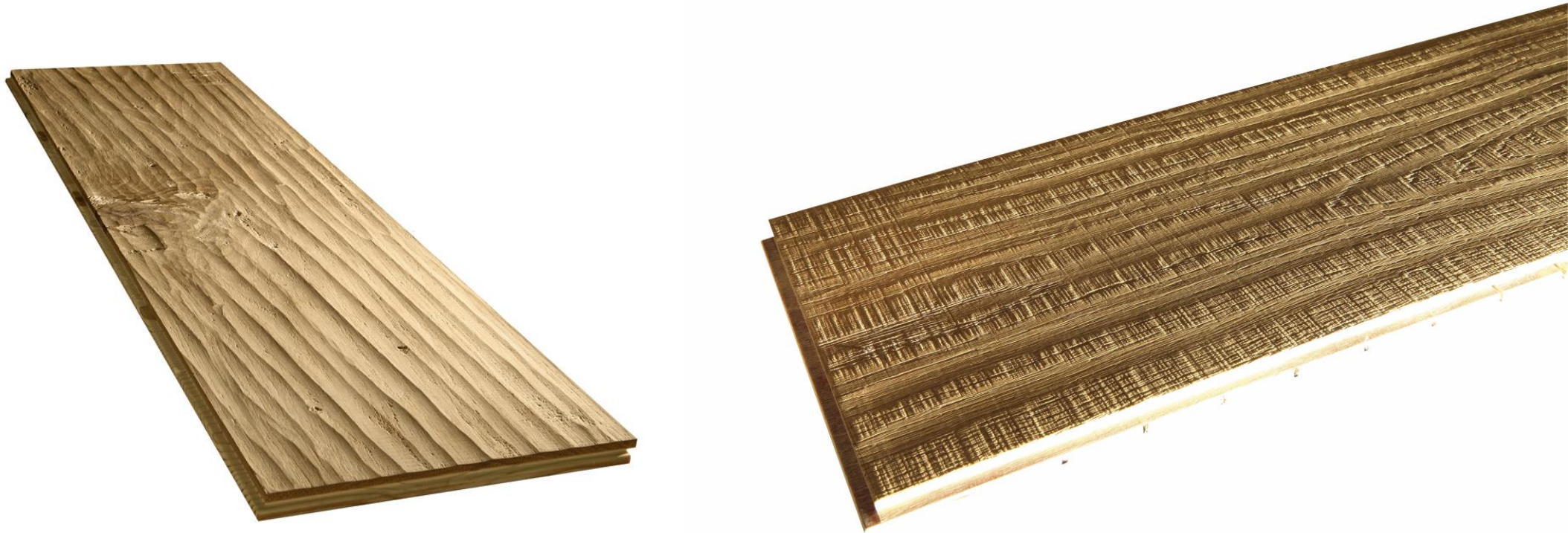




## Sanding solutions – 3D effects with carving unit



This multifunctional **solution** creates the look of a truly carved surface on solid wood and MDF, this technology can be applied to many application sectors such as parquet flooring, home furniture and internal wall manufacturing.







## Sanding solutions – 3D effects with carving unit

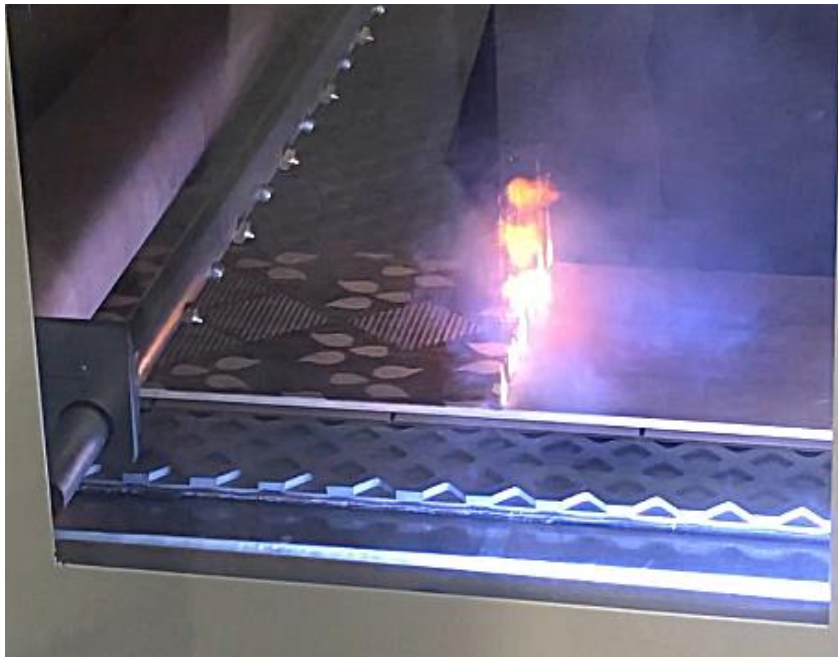


This multifunctional **solution** creates the look of a truly carved surface on solid wood and MDF, this technology can be applied to many application sectors such as parquet flooring, home furniture and internal wall manufacturing.



**14 JUNE 2023**

## Sanding solutions – Laser unit for DMC System



### MAIN TECHNICAL DATA

- Working width max 1.200 mm
- Working speed from 0.2 up to 6 m/min \*
- Working depth max 0.3 mm \*\*
- Laser type radio frequency CO2
- Laser power 850 Watt

(\*) depending on part width and working parameters

(\*\*) depending on processed material and working parameters

**14 JUNE 2023**



## Sanding solutions – **Laser unit for DMC System**

The key advantages of the innovative through-feed solution developed by SCM are:



### **FULLY INTEGRATED**

The unit can be integrated inside the wide belt sander so there is no need to purchase another machine that occupies additional space in the factory.



### **NO INTERRUPTIONS**

The exclusive continuous passing application enables panels of any length to be processed continuously.



### **MAXIMUM FLEXIBILITY**

Whether they are realistic or fantasy subjects, geometric or stylised shapes, the **laser can reproduce any grayscale image** on flooring, furniture and panels. **Imagination is the only limit.**



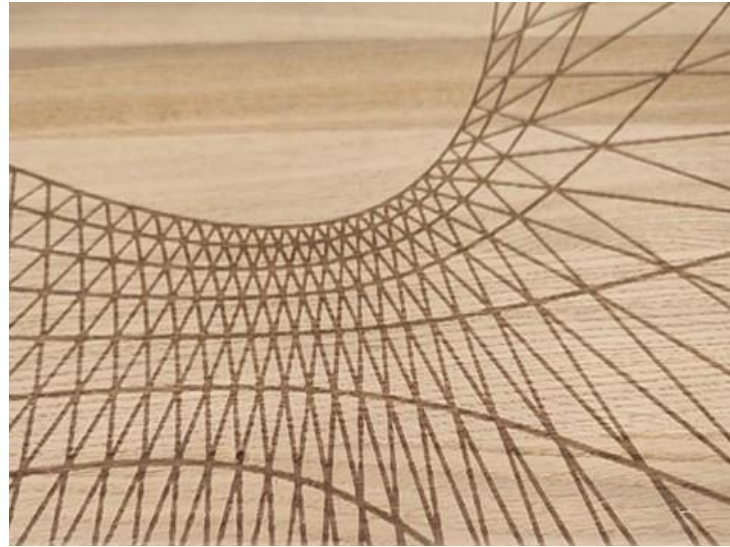


# Sanding solutions – Laser unit for DMC System



## EXAMPLES:

Decoration of veneered boards





## Sanding solutions – Laser unit for DMC System



### EXAMPLES:

Decoration of melamine panels and doors





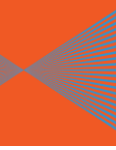
## Sanding solutions – Laser unit for DMC System



### EXAMPLES:

Decoration of veneered boards





## Sanding solutions – Laser unit for DMC System



### EXAMPLES:

Geometric and abstract pattern on wood flooring plank. Possibility to mark even hand-scraped surfaces thanks to the flow focus dynamic system.



**14 JUNE 2023**



## Sanding solutions – Laser unit for DMC System

### EXAMPLES:

Possibility of ennobling fibre cement by marking abstract and/or geometric designs.







## Sanding solutions – Laser unit for DMC System



### EXAMPLES:

Customization of solid surface materials like Corian





# Sanding solutions – Laser unit for DMC System





**Many thanks for  
your kind attention**

